

State of Wyoming Corner Record

(In compliance with the CORNER PERPETUATION AND FILING ACT, Wyoming Statutes, 1977, Section 36~11~101, et seq., and the Rules and Regulations of the Board of Registration for Professional Engineers and Professional Land Surveyors)

The reverse side of this form may be used if more space is needed.

The Record of the original survey and the citation of the source of the historical information (if the corner is lost or obliterated). The description of the corner monumentation evidence as found and/or the monument and it's accessories as established to perpetuate the location of this corner. A sketch of the relative location of this Monument, accessories, and reference points with the course and distance to adjacent corner (s) (if determined during this Survey). The Method and Rationale used for the reestablishment of lost and obliterated corner.

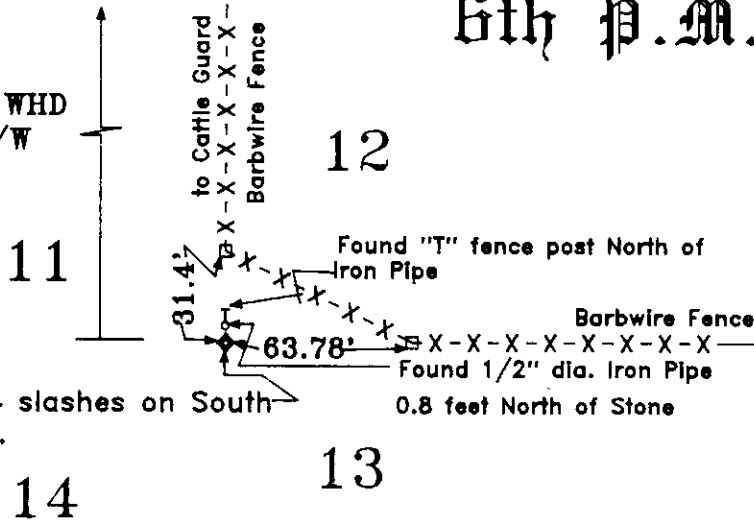
G.L.O. RECORD:

Surveyed by Henry Hay Contract No. 10 on Oct. 1871 finished Nov. 1871.
 Chained North between Section 13 and Section 14, Va. 15°40'East
 40 chains set Granite Boulder 16"X9"X7" for 1/4 Sec. Cor.; at 80 chains, set Granite Boulder 18"X10"X9" for corner to Section 11, Section 12, Section 13 and Section 14....

Found Original Stone appropriately marked, No further monumentation set.
 left references as shown hereon.

T. 13 N. R. 68 W.
 6th P.M.

N 00°31'48"E 5265.36'
 to Section Corner $\frac{2}{11} | \frac{1}{12}$
 N 00°31'48"E 2525.10' to WHD
 R/W Mon on Southerly R/W
 of Interstate Highway 80

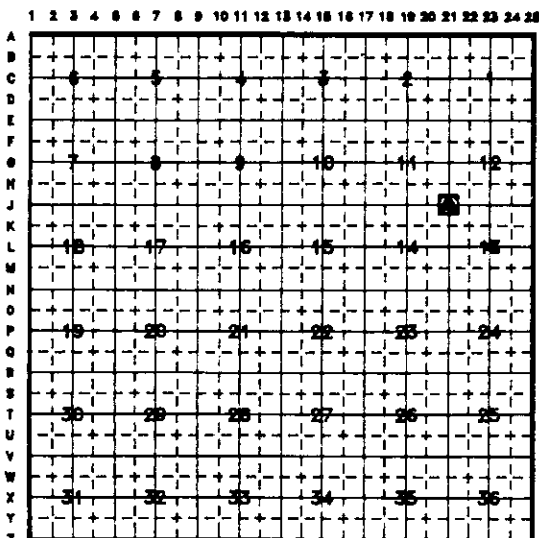


Found Granite Stone with 4 slashes on South & 1 slash on the East side.

Date of Field Work: 17 MARCH A.D. 1999

Office Reference: OA038

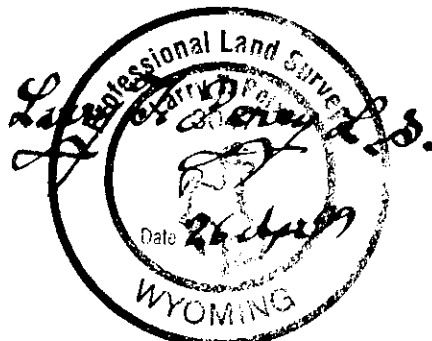
Cross Index Diagram



Firm/Agency, Address
 Terrestrial Surveying & Mapping Co.
 "Your Friendly Neighborhood Surveyor"
 1127 Terry Ranch Road
 Cheyenne, Wyoming 82007
 Telephone Number: (307) 634-9360

This Corner Record was prepared by me or under my direction and supervision.

SEAL & SIGNATURE



1599 APR 26 PM 4:02
 LARAME COUNTY CLERK
 250517

Corner Name: SEC. COR. Section: $\frac{11}{14} | \frac{12}{13}$ T. 13 N. R. 68 W. 6th P.M. Cross Index No. 8-21

BOOK 1518

0807